

6FM134R 12V 134Ah

The rechargeable batteries are lead-lead dioxide systems. The dilute sulfuric acid electrolyte is absorbed by separators and plates and thus immobilized. Should the battery be accidentally overcharged producing hydrogen and oxygen, special one-way valves allow the gases to escape thus avoiding excessive pressure build-up. Otherwise, the battery is completely sealed and is, therefore, maintenance-free, leak proof and usable in any position.



Battery Construction

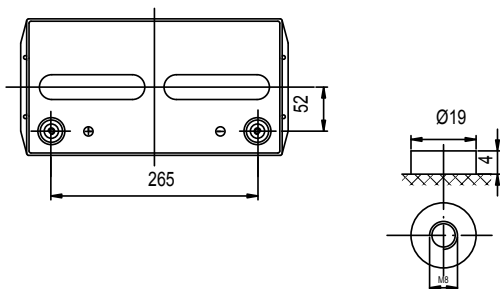
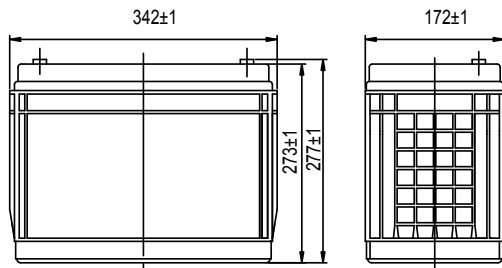
| | | | | | | | | |
|--------------|----------------|----------------|-----------|-------|--------------|----------|------------|---------------|
| Component | Positive plate | Negative plate | Container | Cover | Safety valve | Terminal | Separator | Electrolyte |
| Raw material | Lead dioxide | Lead | PP | PP | Rubber | Copper | Fiberglass | Sulfuric acid |

General Features

- Absorbent Glass Mat (AGM) technology for efficient gas recombination of up to 99% and freedom from electrolyte maintenance or water adding.
- Not restricted for air transport-complies with IATA/ICAO Special Provision A67.
- UL-recognized component.
- Can be mounted in any orientation.
- Computer designed lead, calcium tin alloy grid for high power density.
- Long service life, float or cyclic applications.
- Maintenance-free operation.
- Low self discharge.

Technology Parameter

| | | | | |
|-------------------------------|---|------------------------|-----------------------|-----------------------|
| Battery model | 6FM134R | | | |
| Nominal voltage | 12V | | | |
| Number of cell | 6 | | | |
| Capacity (25°C) | 20hR (6.7A, 10.5V) | 10hR (13.2A, 10.5V) | 5hR (22.5A, 10.5V) | 1hR (86.2A, 9.60V) |
| | 134Ah | 132Ah | 112.5Ah | 86.2Ah |
| Dimensions Max. | Length | Width | Height | Total Height |
| | 342±1 mm | 172±1 mm | 273±1 mm | 277±1 mm |
| Approx. weight | 42.5Kg (93.7lbs) | | | |
| Internal resistance | Full charged at 25°C: 3.8mOhms | | | |
| Self discharge | 3% of capacity declined per month at 20°C (average) | | | |
| Operating temperature range | Discharge | Charge | Storage | |
| | -20~60°C | -10~60°C | -20~60°C | |
| Max. discharge current (25°C) | 950A (5s) | | | |
| Short circuit current | 2550A | | | |

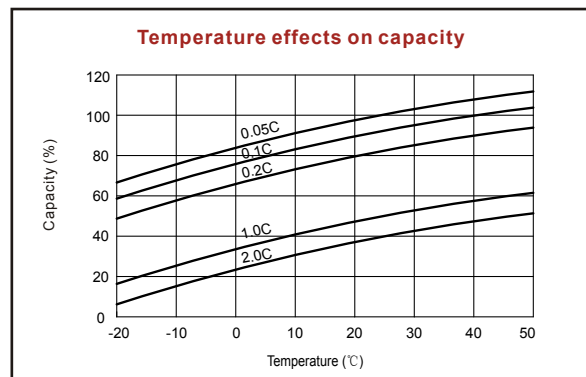
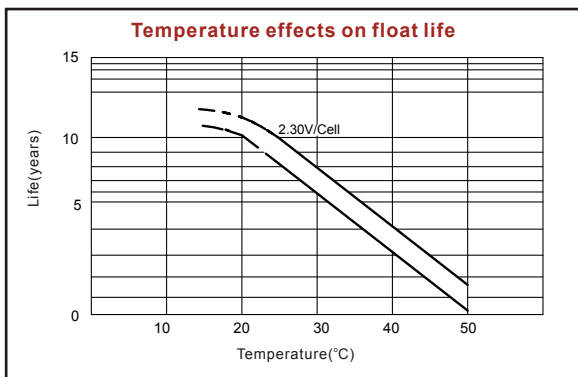
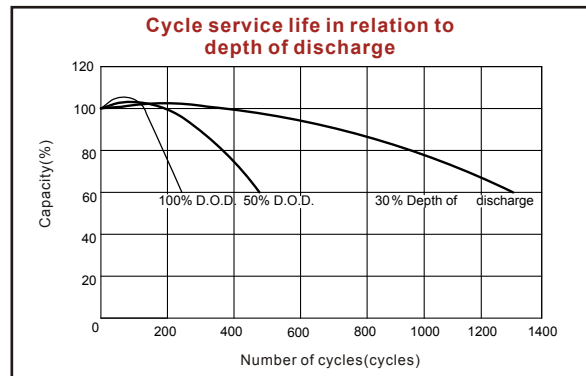
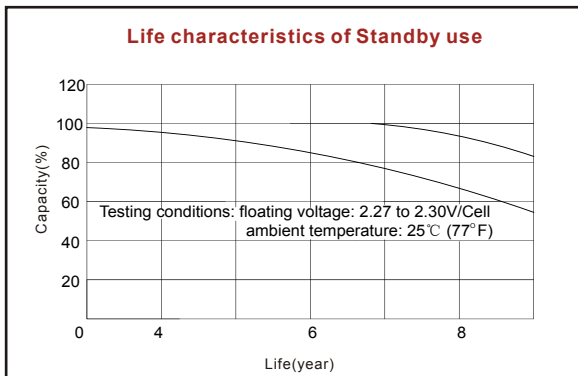
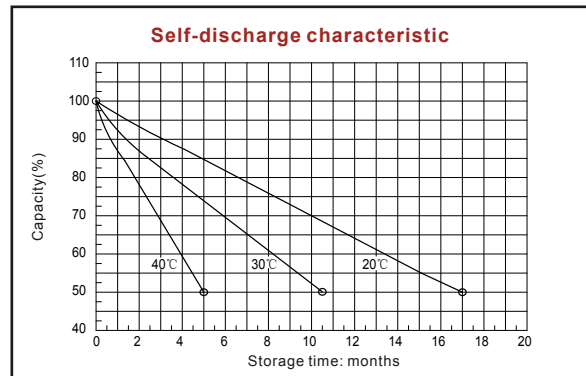
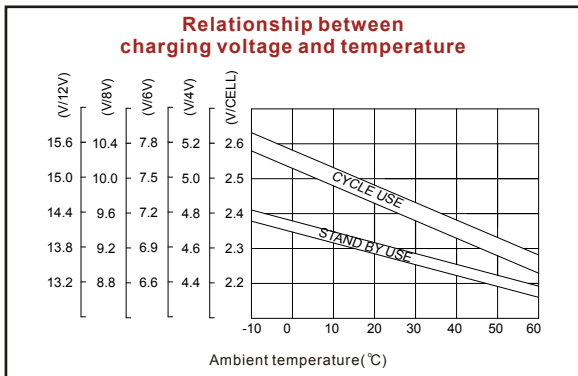
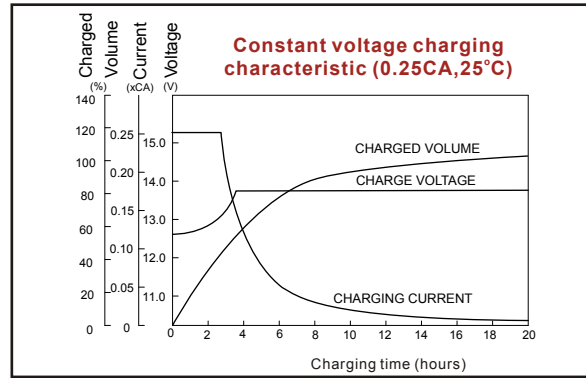
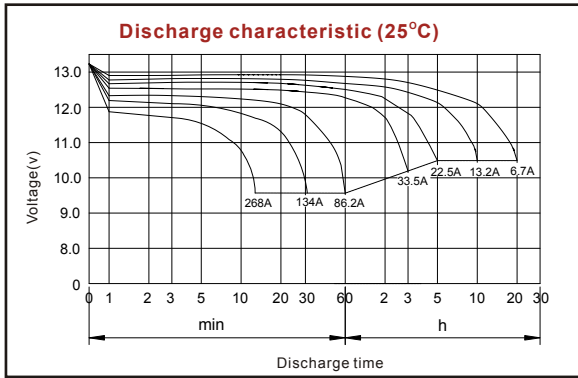


Discharge Constant Current (Amperes at 77°F/25°C)

| End Point Volts/Cell | 5min | 10min | 15min | 30min | 1h | 3h | 5h | 10h | 20h |
|----------------------|------|-------|-------|-------|------|------|------|------|------|
| 1.60V | 400 | 303 | 246 | 139 | 86.2 | 35.0 | 23.8 | 13.4 | 6.80 |
| 1.65V | 374 | 287 | 237 | 135 | 85.6 | 34.2 | 23.5 | 13.3 | 6.78 |
| 1.70V | 348 | 271 | 227 | 131 | 83.8 | 33.5 | 23.0 | 13.2 | 6.75 |
| 1.75V | 322 | 255 | 217 | 126 | 81.3 | 32.8 | 22.5 | 13.2 | 6.70 |
| 1.80V | 296 | 239 | 207 | 123 | 78.7 | 31.8 | 22.1 | 13.1 | 6.67 |

Discharge Constant Power (Watts at 77°F/25°C)

| End Point Volts/Cell | 5min | 10min | 15min | 30min | 45min | 1h | 2h | 3h | 5h |
|----------------------|------|-------|-------|-------|-------|-----|------|------|------|
| 1.60V | 687 | 547 | 436 | 264 | 187 | 173 | 95.0 | 67.3 | 46.8 |
| 1.65V | 652 | 520 | 422 | 256 | 183 | 170 | 93.4 | 66.5 | 46.6 |
| 1.70V | 618 | 493 | 408 | 249 | 179 | 168 | 91.7 | 65.7 | 46.2 |
| 1.75V | 585 | 467 | 394 | 241 | 174 | 163 | 90.0 | 65.0 | 45.9 |
| 1.80V | 547 | 380 | 380 | 233 | 171 | 158 | 89.1 | 63.8 | 45.5 |



ISO9001:2000

MH25860

G4M19906-9202-E-16

www.vision-batt.com

Shenzhen Center PowerTech. Co., Ltd.
 Center Power Industrial Park, Tongfu Industrial District Dapeng Town, 518120 Shenzhen, China
 Tel: (+86-755) 8431 8088 Fax: (+86-755) 8431 8038 E-mail: sales@vision-batt.com